



DESIGNER COLLECTION TUBS MODEL # 91A

Andrea® 1 with Sculpted Finish® 71.625" x 31.625" x 24.75"

GENERAL SPECIFICATIONS:

Material - Acrylic

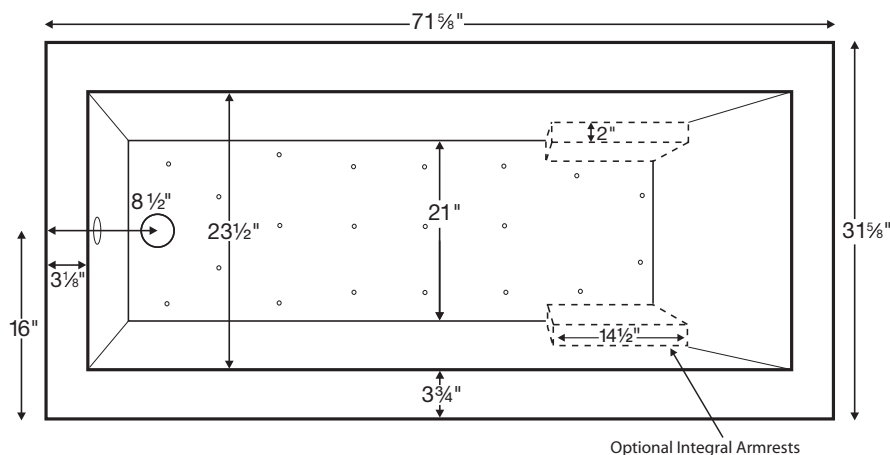
Installation - Freestanding* (see note to left)

Soaker Weight - 160 lbs / 76 kg

Maximum Fill - 80 gal to overflow

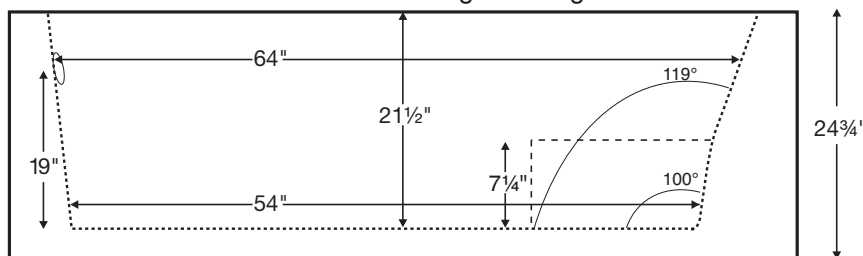
NOTE: Filling this tub to the maximum may require an above average size or dedicated water heater.

*Sculpted Finish is standard on 4 sides, creating a freestanding tub design.
Also available finished on 1, 2 or 3 sides for various installation applications.



The Sculpted Finish process does not allow enough space for mounting fixtures on the tub deck.

Shown with Air Massage Package.



ELECTRICAL COMPONENTS & SPECIFICATIONS

Required Electrical Service - 110 Volt

Hydrotherapy Package	Components Included	GFCI
Air Massage	heated blower	1-15 amp
Air Massage Elite	heated blower, chromatherapy	1-15 amp

For electrical requirements of tub options, see page C-2.

CSA Certified C/US; ANSI Z124.1 for plastic tubs and ANSI 112.19.7 for whirlpool components.

IMPORTANT ORDERING & INSTALLATION INFORMATION:

- Before ordering or installing, please consider future access to equipment.
- Unless ordering Sculpted Finish on 4 sides, please include a diagram specifying which sides will need to be finished, along with location of optional tile flange.
- Overflow **must** be factory installed if drain end is sculpted. Please select drain from options on next page.
- When ordering an air bath, the air blower must be remote mounted.
- If tub is equipped with Chromatherapy, the control box must be remote mounted.
- Specifications and configurations are subject to change without notice.
- Measurements are $\pm 1/2"$ and are subject to change without notice.
- Measurements herein supersede all others published prior to publication date shown below.

See the "Designer Collection Tubs Installation & Operation Manual" included with tub delivery or go to mtibaths.com/support/installation_operation/manuals for all the information necessary to install and operate the tub.

MTI's Customer Service Department is available Monday-Friday 8am-6pm EST at 800-783-8827 or customerservice@mtibaths.com to answer any questions pertaining to ordering or installation.

Hydrotherapy Packages	Package Contents	Sculpted Finish Sides	Part #	MSRP
Soaker	Soaking bath - no jets, pre-leveled foam base	4-sides sculpted	S91A + SCULPT4	\$6,325
		3-sides sculpted	S91A + SCULPT3	\$5,850
		2-sides sculpted	S91A + SCULPT2	\$4,715
		1-side sculpted	S91A + SCULPT1	\$4,435
Air Bath Packages	<i>Air Massage</i> 20 air jets, heated air blower, pre-leveled foam base	4-sides sculpted	AST91A + SCULPT4	\$8,925
		3-sides sculpted	AST91A + SCULPT3	\$8,450
		2-sides sculpted	AST91A + SCULPT2	\$7,315
		1-side sculpted	AST91A + SCULPT1	\$7,035
	<i>Air Massage Elite</i> 30 air jets, heated air blower, Chromatherapy LED lighting, Spa Mode, pre-leveled foam base	4-sides sculpted	AE91A + SCULPT4	\$10,525
		3-sides sculpted	AE91A + SCULPT3	\$10,050
		2-sides sculpted	AE91A + SCULPT2	\$8,915
		1-side sculpted	AE91A + SCULPT1	\$8,635

Lead Time - 20 business days (any configuration)

Premium Options	NOTE: part codes for all options listed in parenthesis.
Radiance - integrated tub shell heating system (RAD100) \$999 <i>see p. C-5</i>	
Chromatherapy - underwater LED lighting (LE) \$560 <i>see p. C-6</i>	
Stereo H₂O - includes 4 integrated audio transducers (STEREOH20) \$1,099 <i>Requires audio source(s) and amplification not provided by MTI - see p. C-7.</i>	
Standard Options	
Color: White (CWH) <i>Note: this tub is only available in white.</i>	
Textured, Slip-Resistant Bottom - meets ASTM F-462-1994 (TXBTM) \$70	
Integral Armrests - 1 pair (INTARM) \$95 <i>see p. C-10</i>	
Teak Seat for use with armrests (TK-REMTSEAT) \$395 <i>see p. C-15</i>	
Accessories & Hardware	
Floor-Mounted High-Flow Tub Filler - two designs available - <i>see p. C-16</i> Contemporary - Chrome (FILLC) \$1,900 ; Brushed Nickel (FILLBN) \$2,050 Traditional - Chrome (FILLTC) \$1,900 ; Brushed Nickel (FILLTBN) \$2,050	
Drain Kits - other finishes also available <i>see pp. C-12-13</i>	
Toe-Tap with Slim-Line Integrated Overflow <i>Choose from:</i> Chrome (SLOT C), Brushed Nickel (SLOTBN), Polished Nickel (SLOT PN) or White (SLOTWH) \$400	
Toe-Tap with Rectangular Overflow - Chrome (WOTRC) \$260 ; Brushed Nickel (WOTRBN) \$265 ; White (WOTRW) \$265	
Toe-Tap with Round Overflow - Chrome (WOTTC) \$260 ; Brushed Nickel (WOTTBN) \$265 ; Polished Nickel (WOTTPN) \$315	
Cable Driven - Chrome (WOCD) \$290 ; Brushed Nickel (WOCD BN) \$335 ; Polished Nickel (WOCD PN) \$475 ; Oil-Rubbed Bronze (WOCDOR) \$475	
Lift & Turn - Chrome (WOC) \$115 ; Brushed Nickel (WOBN) \$210	
Pillows - from \$115 <i>see p. C-14</i>	
Teak Tub Tray - Slatted (TK-TRAY1) or Solid (TK-TRAY2) \$395 <i>see p. C-15</i>	
Teak Bath Mat (TK-MAT3018) \$395 <i>custom sizes also available - see p. C-15</i>	
Installation Aids	
Tile Flange <i>must specify flange location(s) on order - see p. C-25</i> Factory-Installed on 3 sides - rigid ABS (TFK3) \$175 Field Install Kit - includes rigid ABS & adhesive (TFKNI) \$160	

Options Information

Radiance -

Integrated tub surface heating system designed to warm the interior surface of the bathing well. Utilizes electric heating grids for 2 zones; either both backrests or a single backrest and one seated area of the tub floor. See page C-5 for detailed specifications.



Chromatherapy -

Underwater lighting provided by two digitally controlled LED lights. A control button allows a selection of constant colors or preset programs to achieve the desired lighting effects & utilize these chromatic energy sources. See page C-6 for detailed specifications.



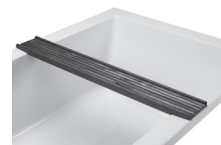
Floor-Mounted High-Flow Tub Filler -

Choose from contemporary or traditional design to complement most manufacturers' lavatory & shower faucets. Fill rate of 15 gallons per minute at 45 psi. Includes hand-held shower with independent valve. See page C-16 for detailed specifications.



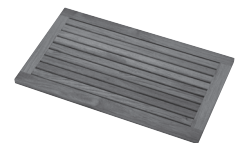
Teak Tub Tray -

Ideal surface for holding a book, beverage or bath accessories. Two styles available. See page C-15 for detailed specifications.



Teak Bath Mat -

Provides a slip-resistant surface to enter and exit the bath. Smooth, durable teak combines beauty with practicality. See page C-15 for detailed specifications.



Inside view of tub.

