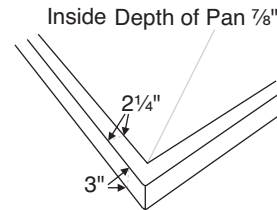


MTSB-6042MT

59.875" x 42" x 3"

Low-profile, Multiple Threshold
Center Drain / Rectangle



NOTE: When ordering, please specify tile flange locations.

Shower Base

Standard Colors: Part # SB6042MT **\$1,520** Choose from:

White (CWH), Bone (CBN), Biscuit (CBS)

Other Colors: Part # SB6042MTGRP1 **\$1,825** Choose from:

Black (CBL), Sterling Silver (CSS)

Quick Ship/Priority - reduces lead time (QSPRI) Call for availability. **\$350**

Options

PVC Drain Kit with Chrome cover (included with shower base)

Also available for an upcharge: Brushed Nickel (SBSQDBN) **\$75**

Special Finishes (SBSQDSF) **\$225** Send sample - allow 2 weeks.

Solid Brass Drain Kit with Stainless cover (SBDKSB) **\$170**

Pre-Leveled Foam Base (PLFSB) **\$150** see p. E-71

Radiance - shower floor heating system (RAD100) **\$999**

Radiance heating grids are fully integrated within the acrylic shell structure of the shower floor. Requires a 110-volt, 15 amp GFCI and remote installation of control box & keypad. For complete information, see p. E-72 or visit mtibaths.com.

Accessories - see pp. E-73-E-79

Teak Shower Seat -

Premium - Natural Stainless (TK-SSEAT2416BNS) **\$2,185**

- High-Polished Stainless (TK-SSEAT2416BHP) **\$2,525**

Standard - Natural Stainless (TK-SSEAT2215NS) **\$810**

- High-Polished Stainless (TK-SSEAT2215HP) **\$1,035**

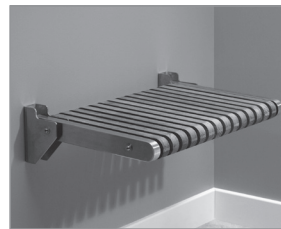
Teak Shower Tray (TK-6042MT) \$1,215

Teak Bath Mat (TK-MAT3018) (custom sizes also available) **\$395**

Shower Niche - constructed of Engineered Solid Stone (ESS)

Matte Finish - White (SSNWHMT) or Biscuit (SSNBSMT) **\$440**

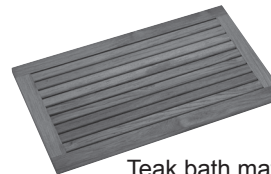
Gloss Finish - White (SSNWHGL) or Biscuit (SSNBSGL) **\$590**



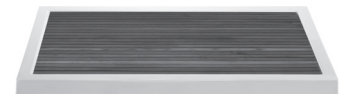
Premium teak seat
Size 24" x 16"



Standard teak seat
Size 22" x 15"



Teak bath mat



Teak shower tray



Shower niche

CONSTRUCTION AND STANDARD FEATURES

- Multiple threshold design; 3.5" drain opening pre-drilled.
- Low-profile, narrow threshold and shallow pan.
- Factory-installed tile flange on 1, 2 or 3 sides to facilitate installation.
PLEASE SPECIFY WHICH SIDES WHEN ORDERING.
- Textured bottom that meets ASTM F-462-1994 certification requirements for safer showering.
- Durable Lucite® cast acrylic shell is extremely scratch- and stain-resistant, yet renewable because the color goes all the way through the material.

- Non-porous surface makes cleaning and sanitizing faster and more effective.
- Multi-layered backing of thick fiberglass / resin / titanium encloses wood reinforcement to prevent flexing of floor pan.
- At least 30% thicker and stronger than other makes.
- Lead time - 5 business days.
- 10-year Limited Residential Warranty.
- Shipping Weight: 125 lbs

SHOWER BASE INSTALLATION: Add bedding compound to fully support bottom of shower base. MTI's optional Pre-Leveled Foam Base requires no additional bedding compound or support. See installation instructions. Measurements are $\pm 1/2"$ and are subject to change without notice. Data herein supersedes all previous prior to publication date indicated below.